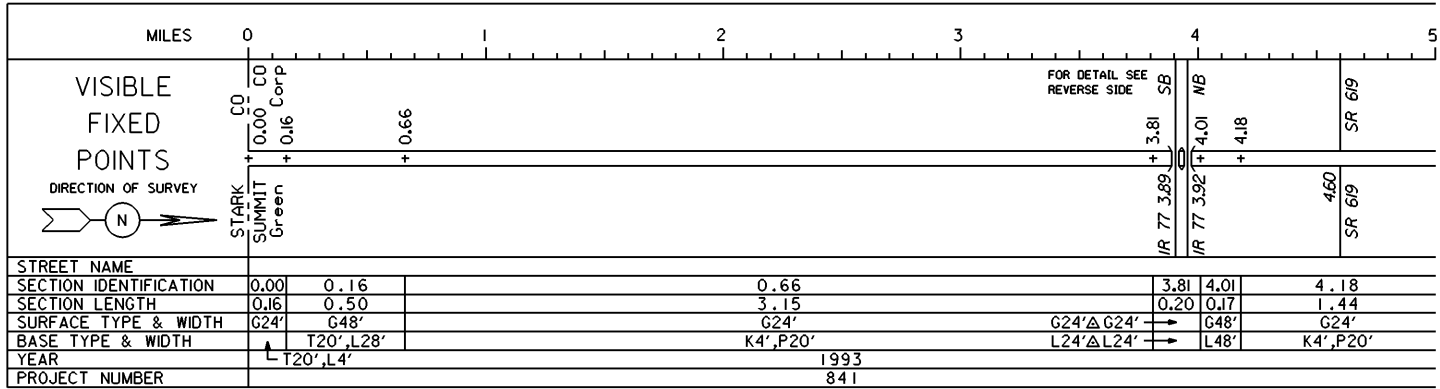


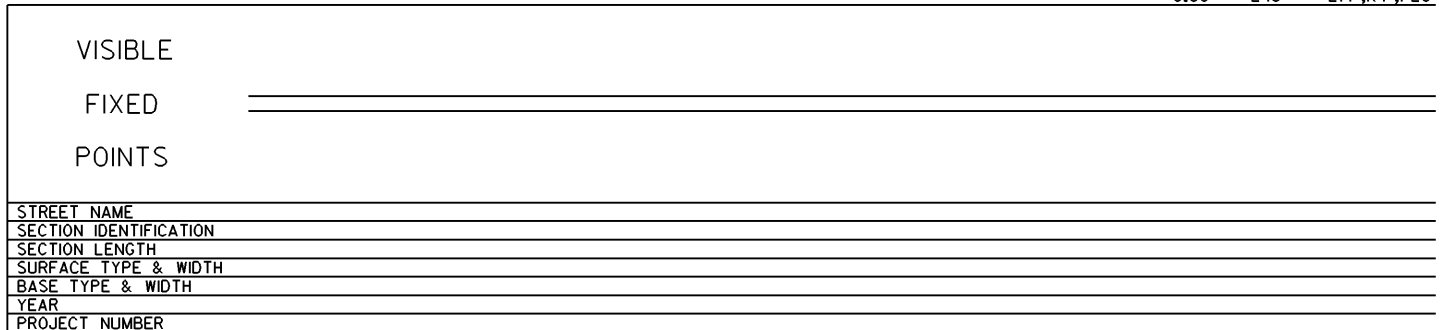
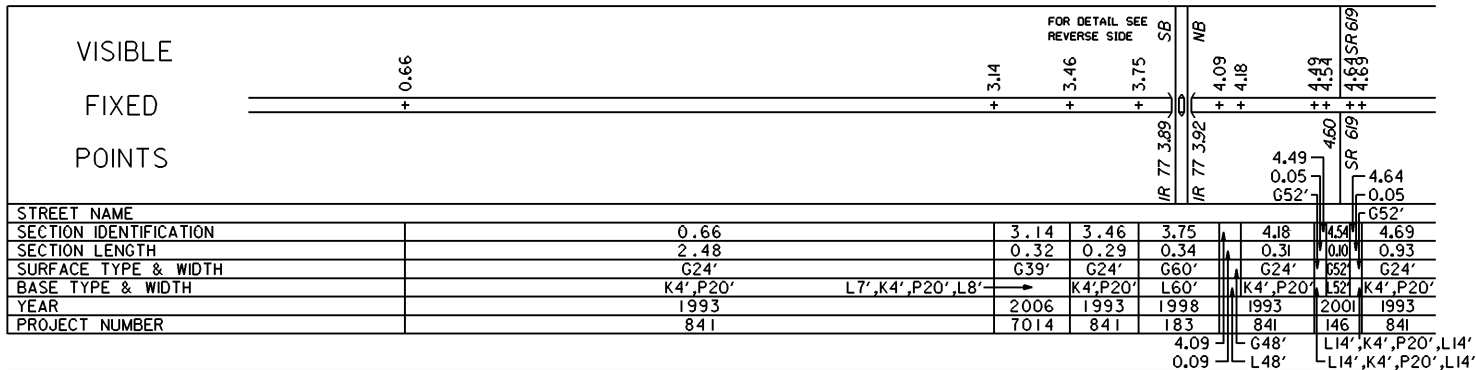
STATE OF OHIO - DEPARTMENT OF TRANSPORTATION

STATE ROUTE SECTIONS ON CONTINUOUS MILEAGE STATIONING

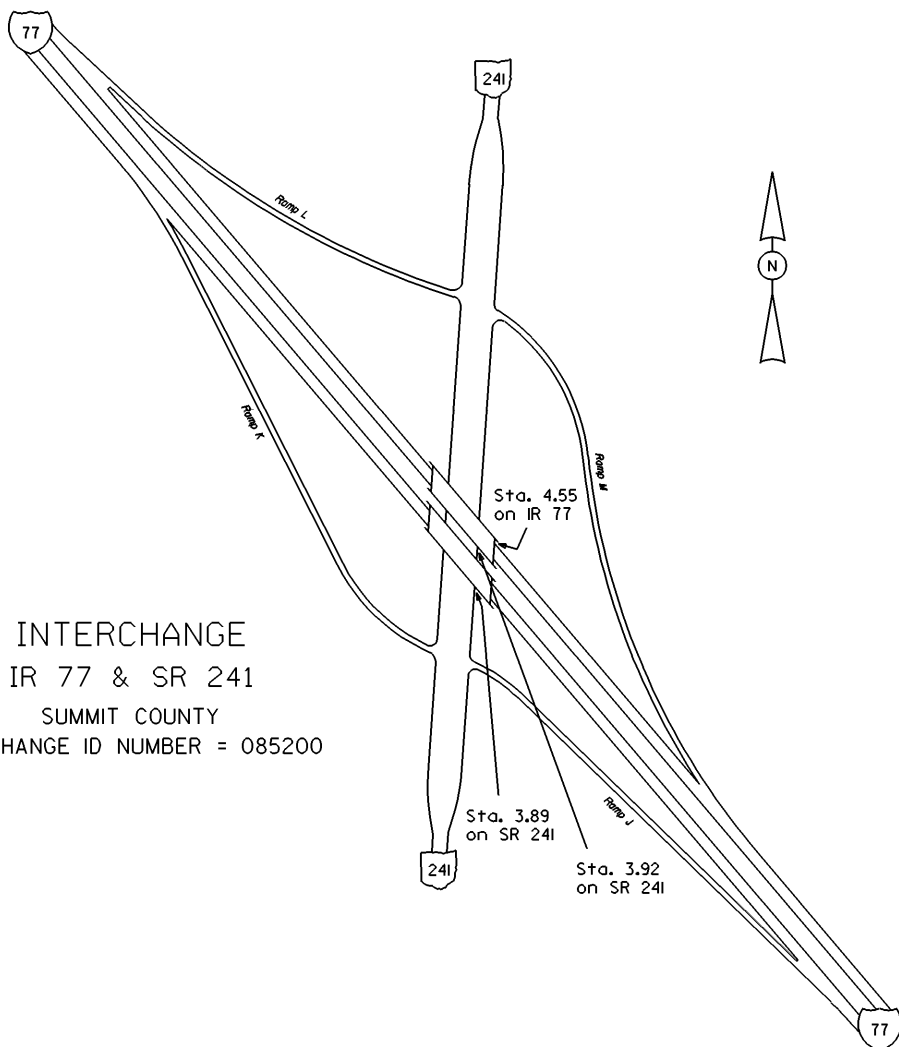
DISTRICT	4
COUNTY	SUMMIT
ROUTE	SR 241



PERPETUATION

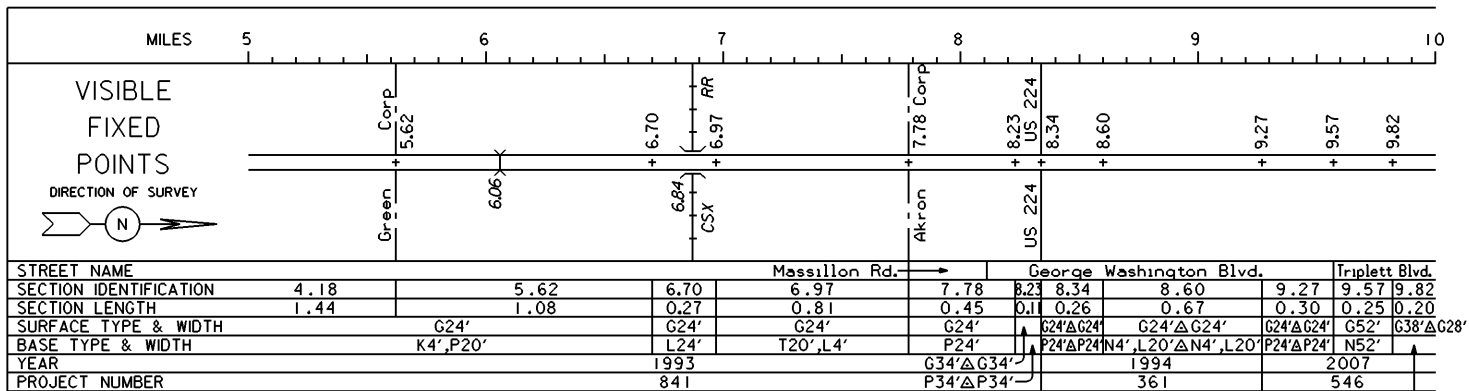


INTERCHANGE
IR 77 & SR 241
SUMMIT COUNTY
INTERCHANGE ID NUMBER = 085200

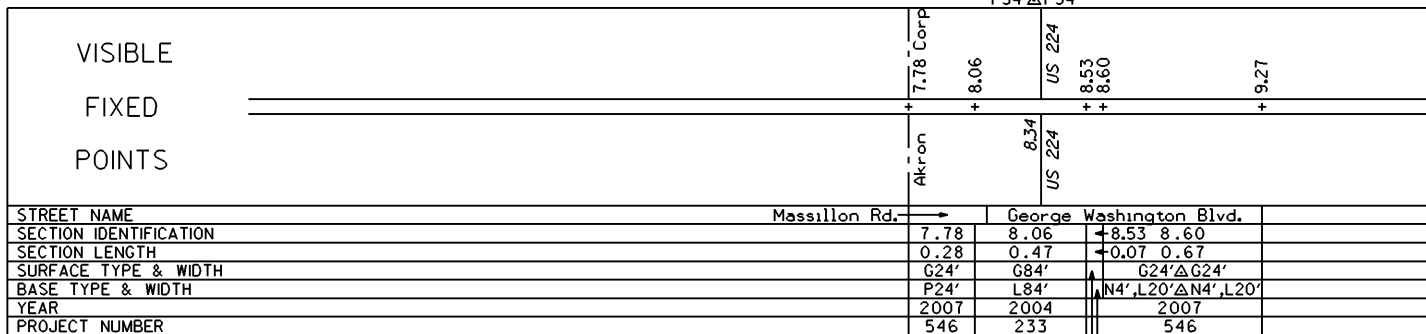
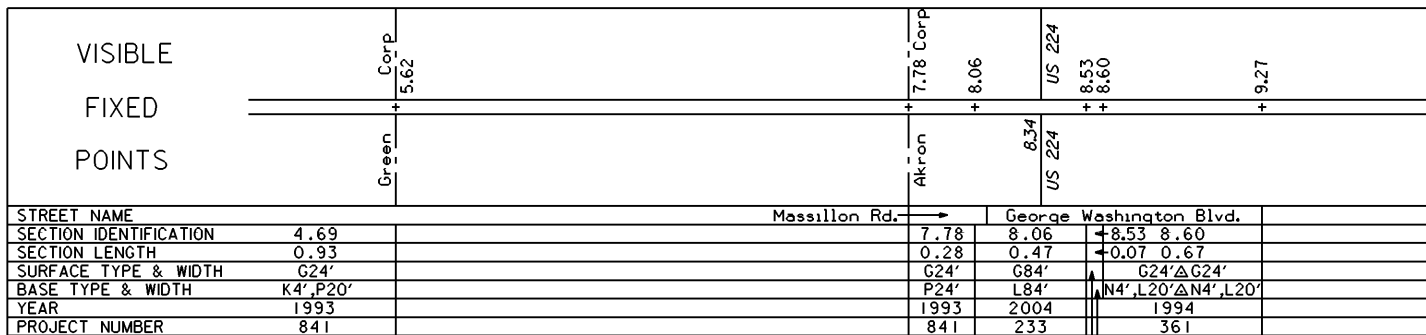


STATE OF OHIO - DEPARTMENT OF TRANSPORTATION
STATE ROUTE SECTIONS ON CONTINUOUS MILEAGE STATIONING

DISTRICT 4
COUNTY SUMMIT
ROUTE SR 241

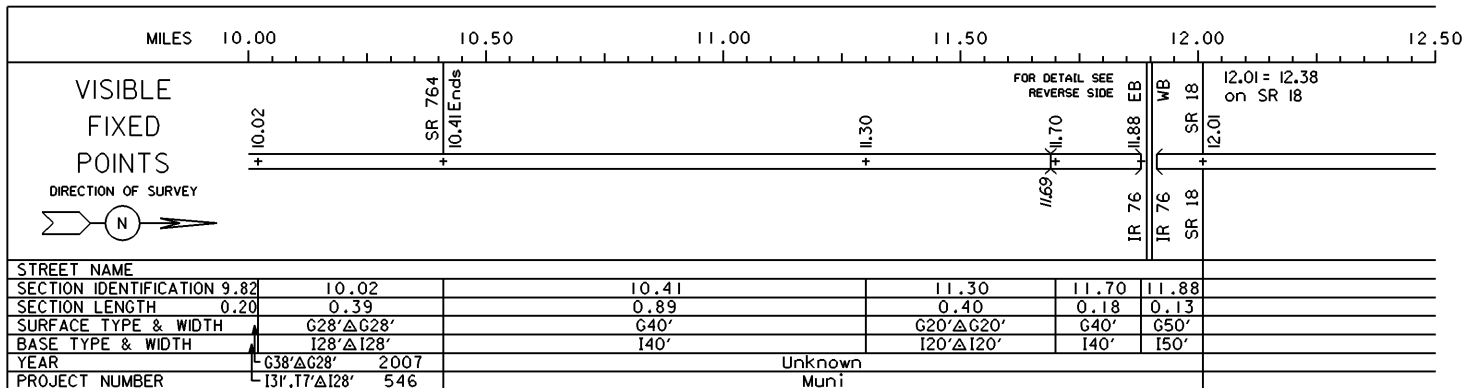


PERPETUATION



STATE OF OHIO - DEPARTMENT OF TRANSPORTATION
STATE ROUTE SECTIONS ON CONTINUOUS MILEAGE STATIONING

DISTRICT 4
COUNTY SUMMIT
ROUTE SR 241



PERPETUATION

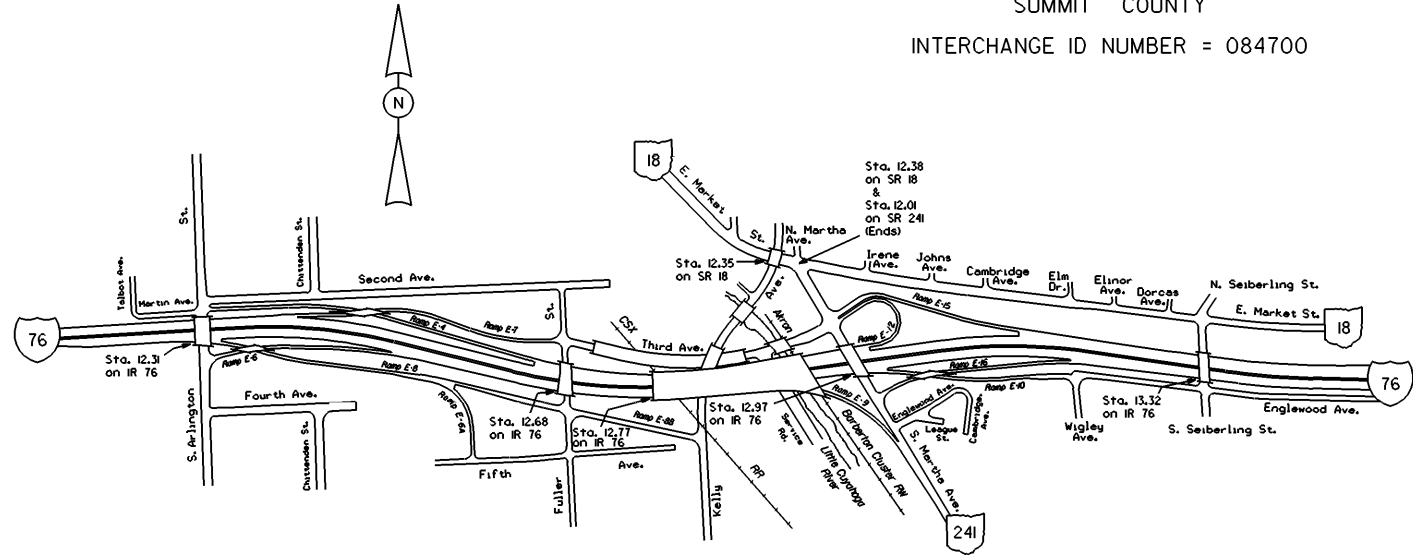
VISIBLE
FIXED
POINTS

STREET NAME	SECTION IDENTIFICATION	SECTION LENGTH	SURFACE TYPE & WIDTH	BASE TYPE & WIDTH	YEAR	PROJECT NUMBER

VISIBLE
FIXED
POINTS

STREET NAME	SECTION IDENTIFICATION	SECTION LENGTH	SURFACE TYPE & WIDTH	BASE TYPE & WIDTH	YEAR	PROJECT NUMBER

INTERCHANGES
 IR 76, SR 18, SR 241,
 S. Arlington & Fuller St.
 SUMMIT COUNTY
 INTERCHANGE ID NUMBER = 084700



IR76 SHEET 3 OF 4
 SR241 SHEET 3 OF 3